

Soft Starters MICROSTART 1.5 / 3 1.5

Features:

- three-phase controlled soft starter
- easy mounting, also for retrofitting into existing plants
- terminal arrangement suitable for switchgear connection
- for snap-mounting on 35mm standard rail
- integrated bypass relay
- no mains neutral conductor (N) required
- functional peak current reduction
- degree of protection IP 20



Soft Starters
MICROSTART 1.5 / 3
CE

Function:

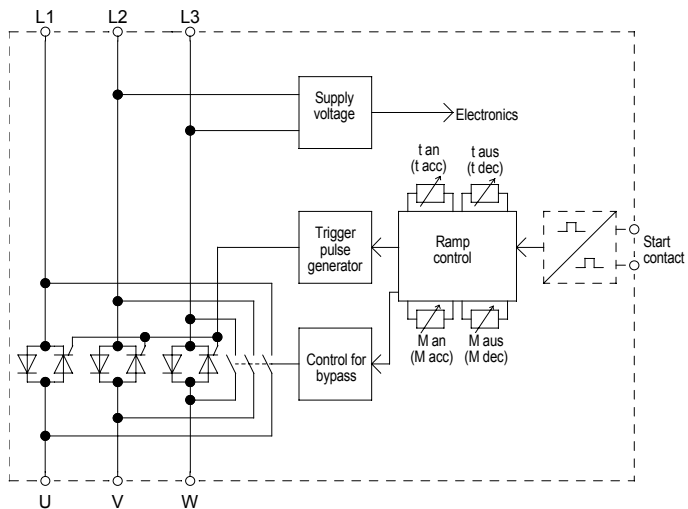
- soft start - soft stop
- 4 separately adjustable parameters starting torque, acceleration time, soft stop torque, deceleration time
- soft start and soft stop via control contact possible

Typical Applications:

pumps, ventilators
belt drives, driving pulleys / coil winders
conveying machinery
compressors

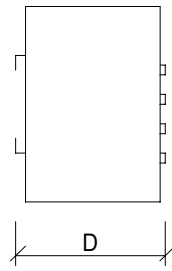
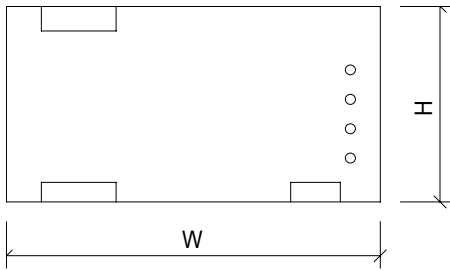
Upon Request:

- potential-free input
-control voltage 10 ... 30VDC



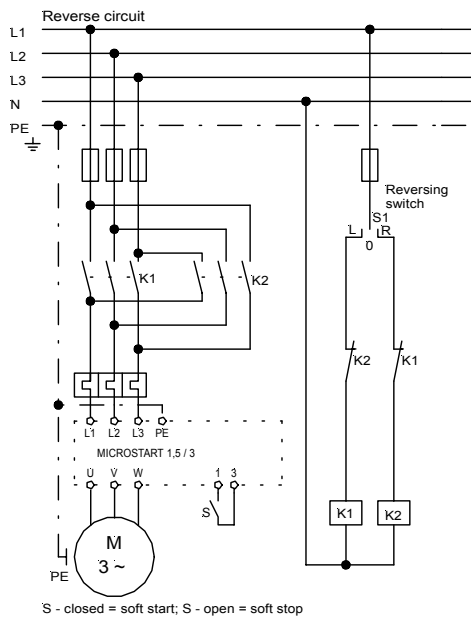
Technical Data	MICROSTART	
	1.5	3
Mains / Motor voltage	400V ± 15% 50/60Hz	
Device nominal current	4A	6,5A
Motor rating	1.5kW	3kW
min. Motor load	10% of the device power rating	
Adjustment range of starting torque	0 ... 80%	
Adjustment range of acceleration time	1 ... 20s	
Adjustment range of soft stop torque	20 ... 80%	
Adjustment range of deceleration time	0 ... 20s	
Reset time	200ms	
max. Switching cycle	120/h	60/h
External fuse „high-speed“	16A	25A
Ambient / Storage temperature	0°C ... 45°C / -25°C ... 75°C	
Weight	0.75kg	0.75kg
Order number	21300.38001	21300.38003

Dimensions:



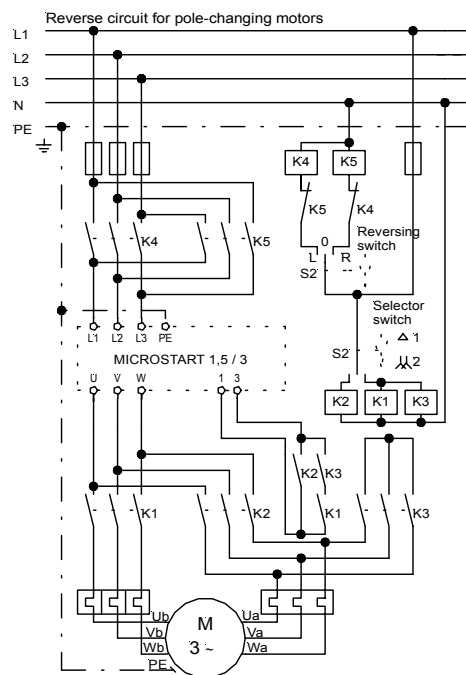
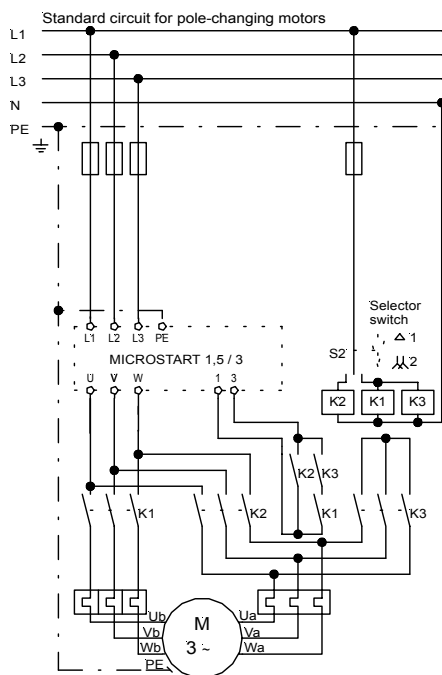
	W	H	D
Mounting dimensions	166mm	106mm	55mm

Connection Diagram:



EMC
 The limit values for emitted interference according to the applicable device standards do not rule out the possibility that receivers and susceptible electronic devices within a radius of 10m are subjected to interference.
 If such interference, that is definitely attributable to the operation of the soft starters "MICROSTART", occurs, the emitted interference can be reduced by taking appropriate measures.
 Such measures are, e.g.:
 to connect reactors (3mH) or a suitable mains filter in series before the soft starter, or to connect X-capacitors (0,15µF) in parallel to the supply voltage terminals.

S - closed = soft start; S - open = soft stop



For pole-changing motors trimmer t aus to 0 (left stop)