

Features:

- ❑ two-phase controlled soft starter
- ❑ easy mounting, also for retrofitting into existing plants
- ❑ integrated bypass relay
- ❑ no mains neutral conductor (N) required
- ❑ parameterization by means of three potentiometers
- ❑ economically priced replacement for star/delta switches
- ❑ for mounting on top hat rail
- ❑ current reduction during acceleration
- ❑ very compact design, overall width from 45mm on
- ❑ degree of protection IP20



Soft Starters
DUOSTART 1.5 ... 22
CE

Function:

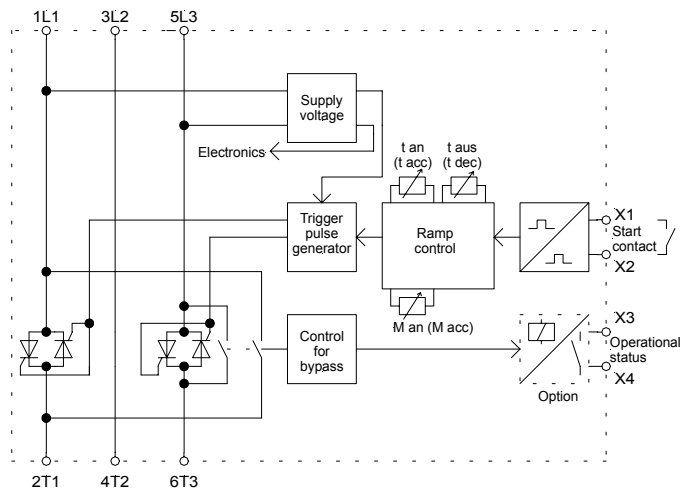
- ❑ soft start and soft stop
- ❑ potential-free control input for soft start and soft stop
- ❑ 3 separately adjustable parameters starting torque, acceleration time, deceleration time
- ❑ control (start/stop) with contact or voltage 10-42VDC

Typical Applications:

door and gate drives
pumps, ventilators
conveyors
packaging machinery
transformer soft start

Options:

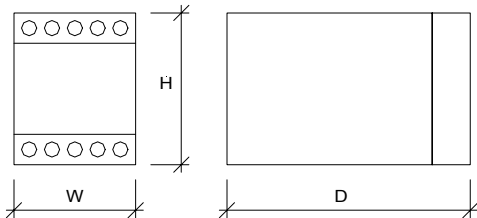
- ❑ DUOSTART ... M potential-free output for operational status
- ❑ DUOSTART ... S control (start/stop) with voltage 10-42VDC
- ❑ external 24V supply voltage (wide voltage range capability)



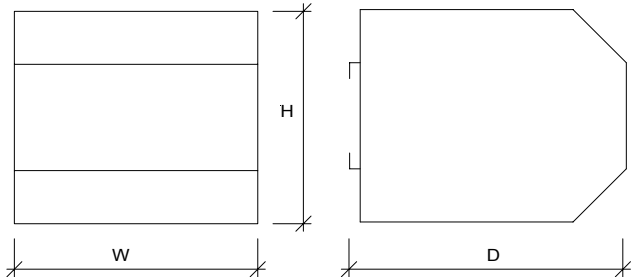
Technical Data	DUOSTART					
	1.5	3	5.5	7.5	11	22
Mains / Motor voltage	400V ±10% 50/60Hz					
Device nominal current	3.5A	6.5A	12A	15A	25A	45A
Motor rating at 400V mains voltage	1.5kW	3kW	5.5kW	7.5kW	11kW	22kW
min. Motor load	40% of the device power rating					
Starting torque	0 ... 80%					
Acceleration time	0.5 ... 12s					
Deceleration time	0.5 ... 12s					
Reset time	200ms					
Max. Switching cycle	90/h	60/h	30/h	60/h	30/h	20/h
Wire range	solid 2x 2.5mm ²	stranded 2x 2.5mm ²	solid 2x 2.5mm ²	stranded 6mm ²	solid 6mm ²	stranded 16mm ²
External fuse "high-speed"	16A	25A	35A	50A	125A	160A
Ambient / Storage temperature	0°C ... 45°C / -25°C ... 75°C					
Weight	0.4kg	0.4kg	0.4kg	0.8kg	0.8kg	1,6kg
Special voltages	230V	230V 480V	230V 480V	230V 480V	230V 480V	230V 480V
Order number	21500.40001	21500.40003	21500.40005	21500.40007	21500.40011	21500.40022
Option „M“	21501.40001	21501.40003	21501.40005	21501.40007	21501.40011	21501.40022
Option „S“	21502.40001	21502.40003	21502.40005	21502.40007	21502.40011	21502.40022

Abmessungen:

DUOSTART 1.5 ... 5.5

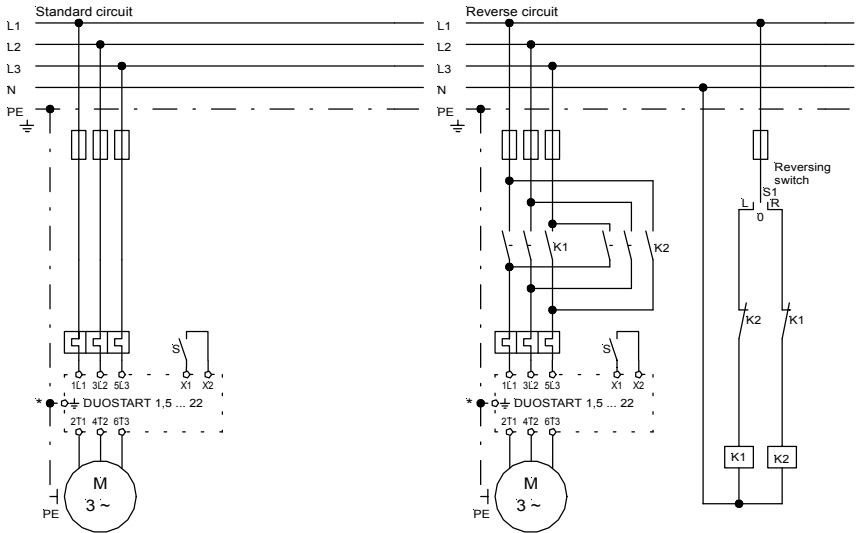


DUOSTART 7.5 / 11 / 22

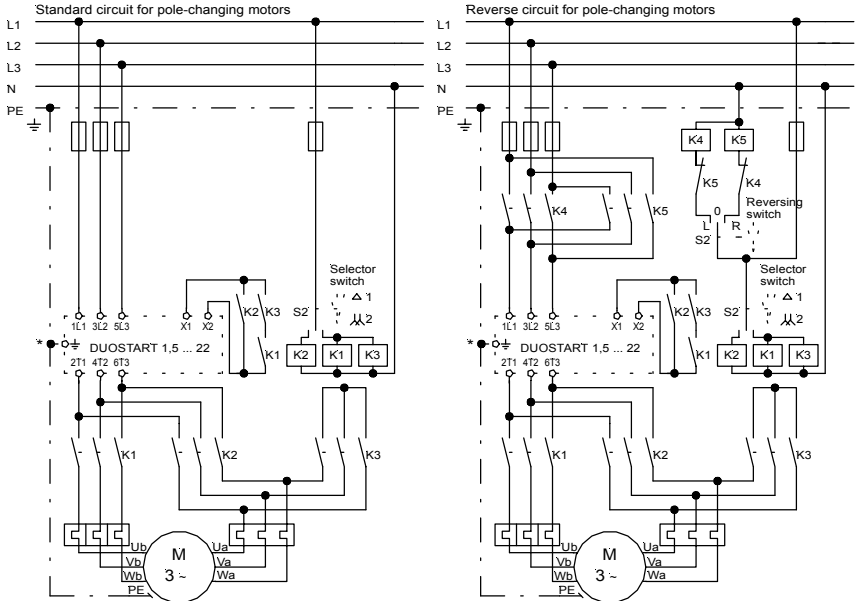


Mounting dimensions	W	H	D
DUOSTART 1.5 ... 5.5	45mm	73mm	122mm
DUOSTART 7.5 / 11	90mm	105mm	105mm
DUOSTART 22	165mm	105mm	105mm

Connections Diagrams:



S - closed = soft start; S - open = soft stop



For pole-changing motors trimmer t aus to 0 (left stop)

EMC
 The limit values for emitted interference according to the applicable device standards do not rule out the possibility that receivers and susceptible electronic devices within a radius of 10m are subjected to interference.
 If such interference, that is definitely attributable to the operation of the soft starters "DUOSTART", occurs, the emitted interference can be reduced by taking appropriate measures.
 Such measures are, e.g.:
 - to connect reactors (3mH) or a suitable mains filter in series before the soft starter, or to connect X-capacitors (0,15µF) in parallel to the supply voltage terminals.

* PE connection only 7.5 and 22kW